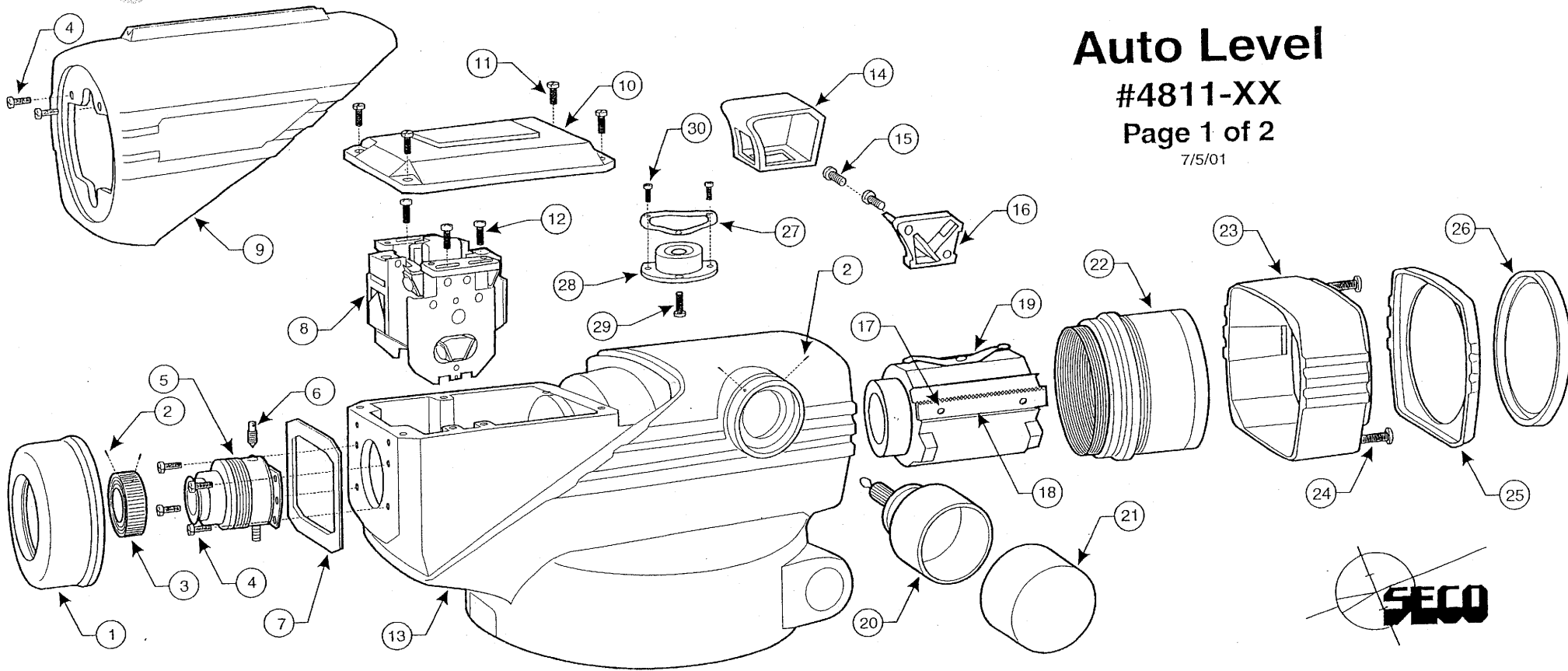


Auto Level

#4811-XX

Page 1 of 2

7/5/01



No	Part Number	Description	Qty
1	4811-MB-1	Reticule Cover	1
2	4811-MB-2	Set Screw	4
3	4811-MB-3	Eyepiece Ring	1
4	4811-MB-4	Screw, M2.5 x 5	6
5	4811-MB-524	24X Eyepiece Assembly w/Reticule	1
5	4811-MB-532	32X Eyepiece Assembly w/Reticule	1
6	4811-MB-6	Reticule Adjusting Screw	1
7	4811-MB-7	Gasket, Eyepiece	1
8	4811-MB-8	Compensator Assembly	1
9	4811-MB-9	Eye End Cover	1
10	4811-MB-10	Compensator Cover w/Gasket	1
11	4811-MB-11	Cover Screw M2.5 X 8	4
12	4811-MB-12	Screw, Compensator	3
13	4811-MB-13	Body w/Axis	NA
14	4811-MB-14	Mirror Cover	1
15	4811-MB-15	Mirror Screws	2

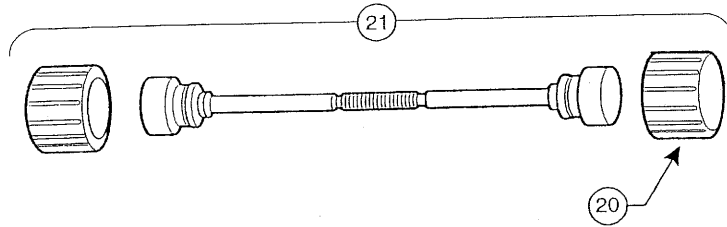
No	Part Number	Description	Qty
16	4811-MB-16	Mirror Assy	1
17	4811-MB-17	Rack Screw	2
18	4811-MB-18	Rack, Focus	1
19	4811-MB-19	Focus Tube Assy w/Rack	1
20	4811-MB-20	Focus Pinon Assy	1
21	4811-MB-21	Focus Knob Cover	1
22	4811-MB-2224	Objective Assembly 24X	NA
22	4811-MB-2232	Objective Assembly 32X	NA
23	4811-MB-23	Objective Cover	1
24	4811-MB-24	Objective Cover Screw	2
25	4811-MB-25	Objective Cover Trim	1
26	4811-MB-26	Dust Cap	1
27	4811-MB-27	Wave Washer	1
28	4811-MB-28	Circular Vial Assembly	1
29	4811-MB-29	Screw	1
30	4811-MB-30	Adjusting Screw	2

Auto Level

#4811-XX

Page 2 of 2

9/4/01



No	Part Number	Description	Qty
1	4811-B-1	Snap Ring	2
2	4811-B-2	Washer	2
3	4811-B-3	Wave Washer	1
4	4811-B-4	Tangent Gear	1
5	4811-B-5	Spacer Washer	1
6	4811-B-6	Tension Washer	1
7	4811-B-7	Horz Circle	1
8	4811-B-8	Axis and Leveling Base	1
9	4811-B-9	Axis Nut	1
10	4811-B-10	Cover Plate	1
11	4811-B-11	Bell Washer	1
12	4811-B-12	Leveling Screw	3
13	4811-B-13	Tension Plate (type 1)	1
14	4811-B-14	Contact Pad	3
15	4811-B-15	Base Plate	1
16	4811-B-16	Tension Screws	3
17	4811-B-17	"C" Ring	3
18	4811-C-1	Case Strap	1
19	4811-C-2	Case Complete	1
20	4811-T-3	Tangent Knob	2
21	4811-T-4	Tangent complete w/Knob	1
22	4811-B-18	Tension Plate (type2)	1
23	4811-B-19	Friction Bearing	3

